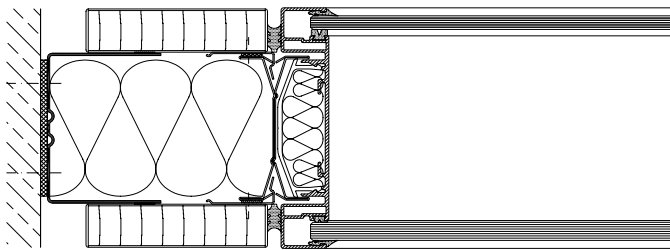
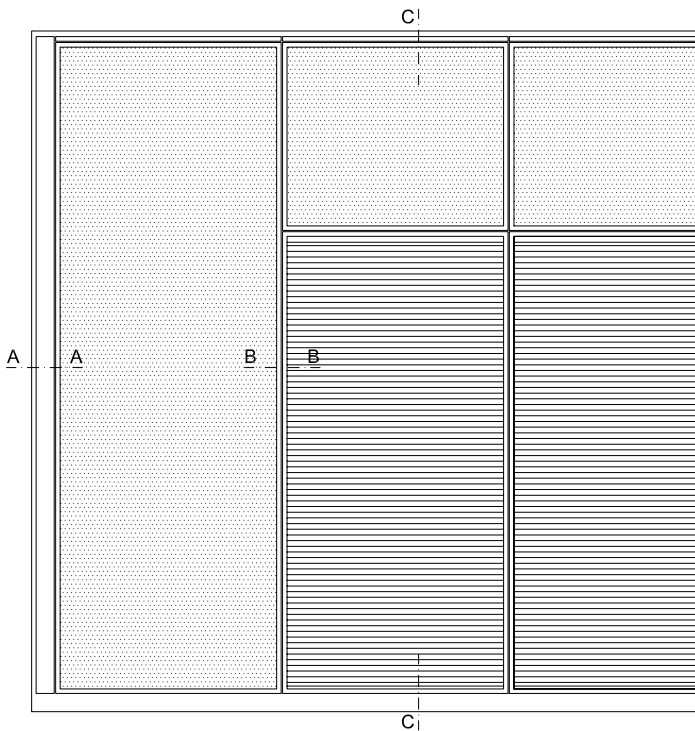
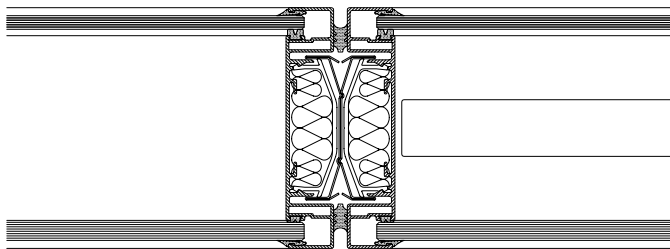


Glass wall fecofix

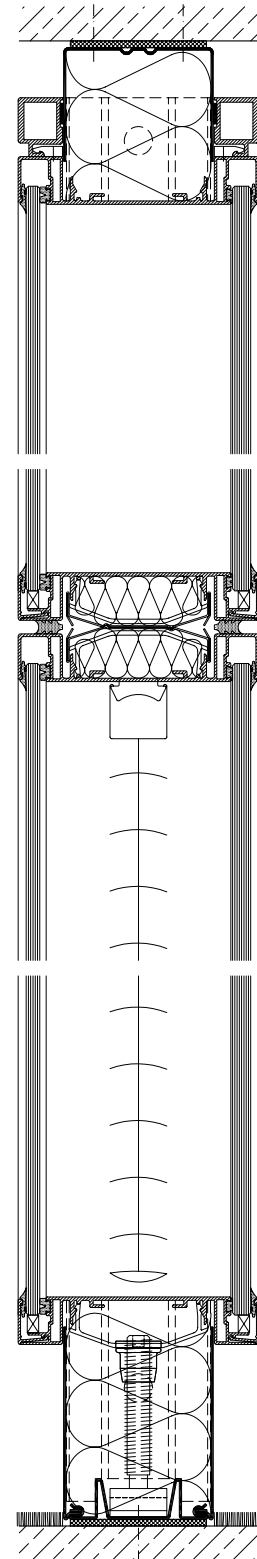
Aluminium frame only 20 mm wide
Wall flush double glazing
Integrated venetian blind
Sound insulation $R_{w,P} = 39-46$ dB



section A - A



section B - B



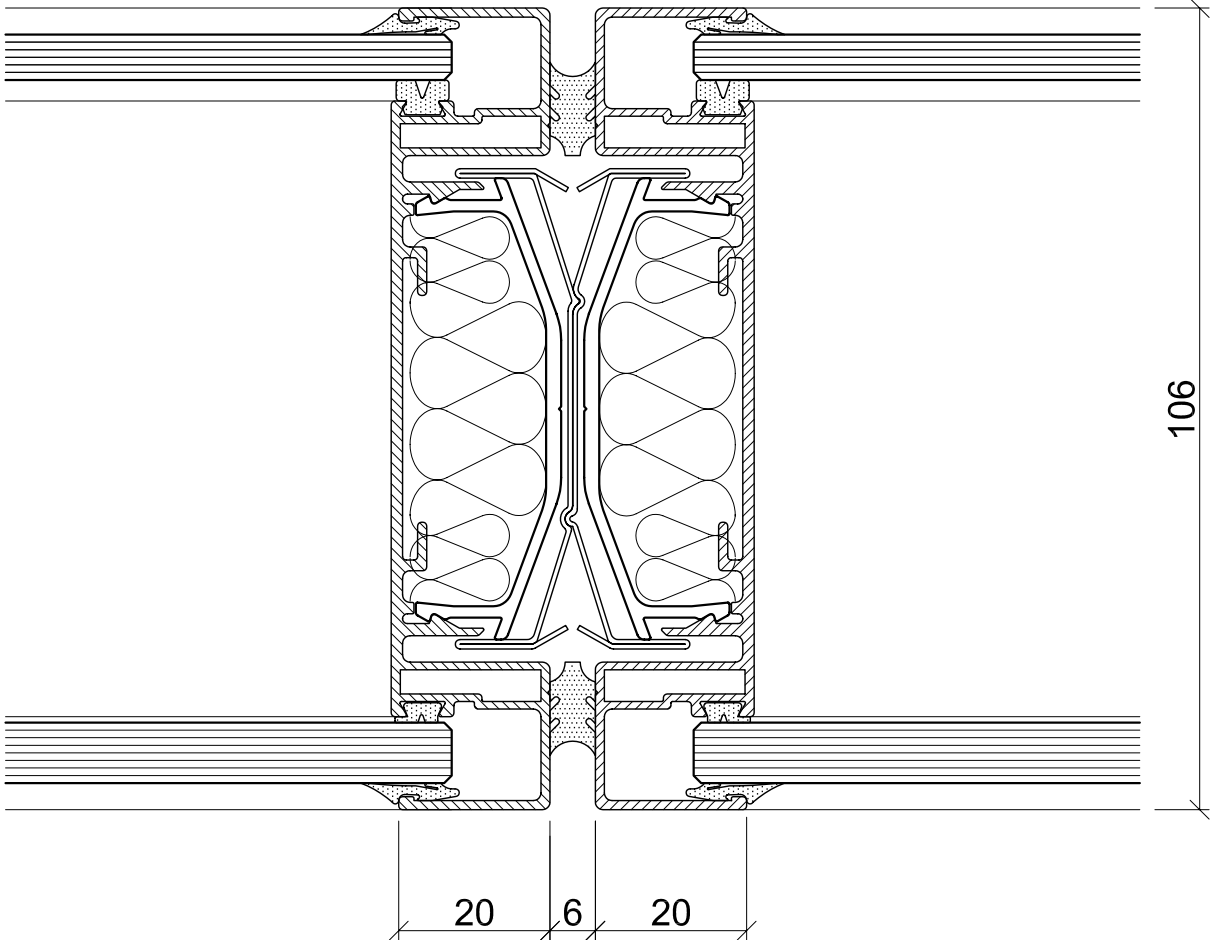
section C - C

scale ~1:3

FF-GG-AN.1

Glass wall fecofix

Vertical joint

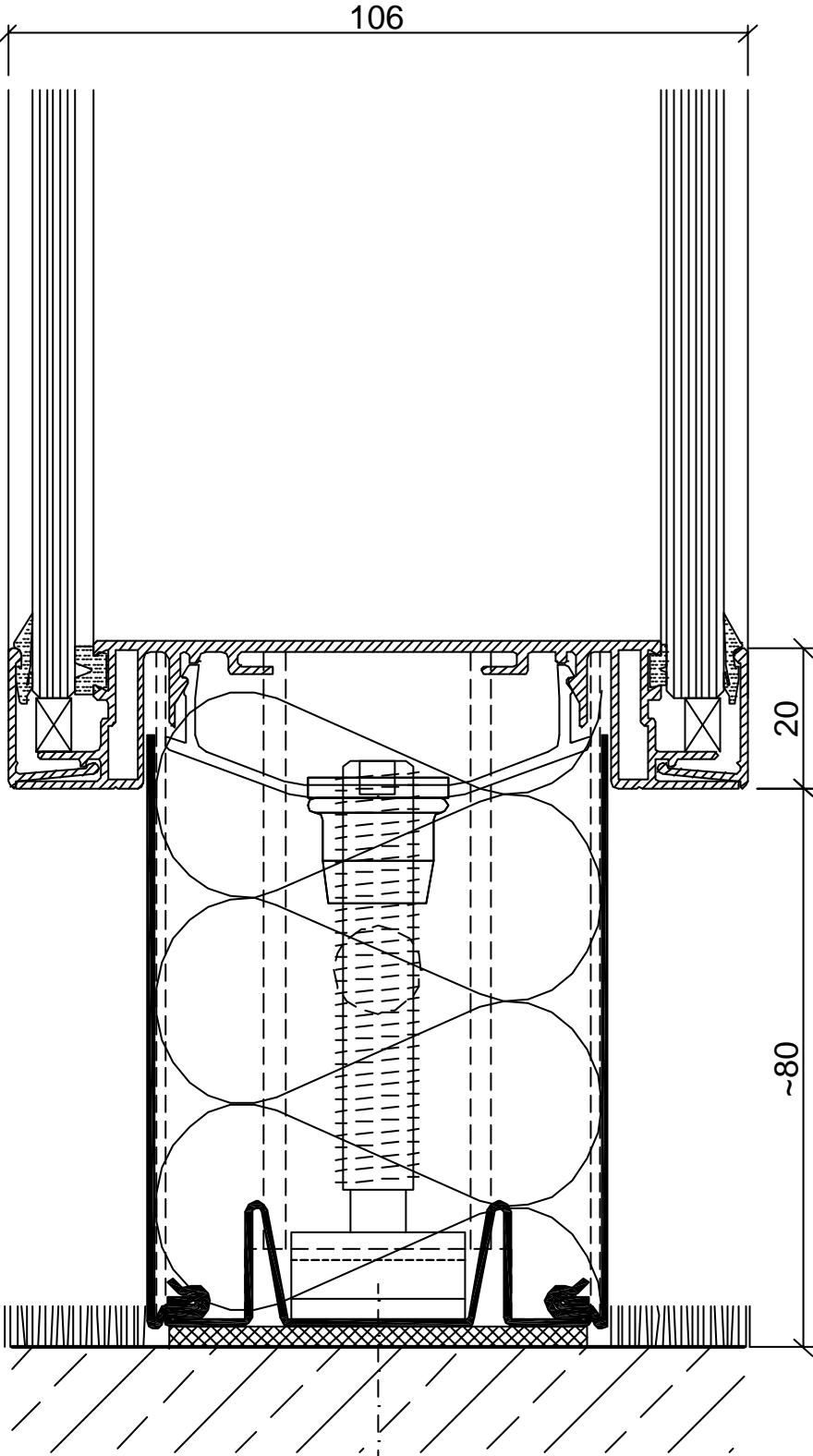


scale 1:1

FF-GG-MF.1

Glass wall fecofix

Bottom

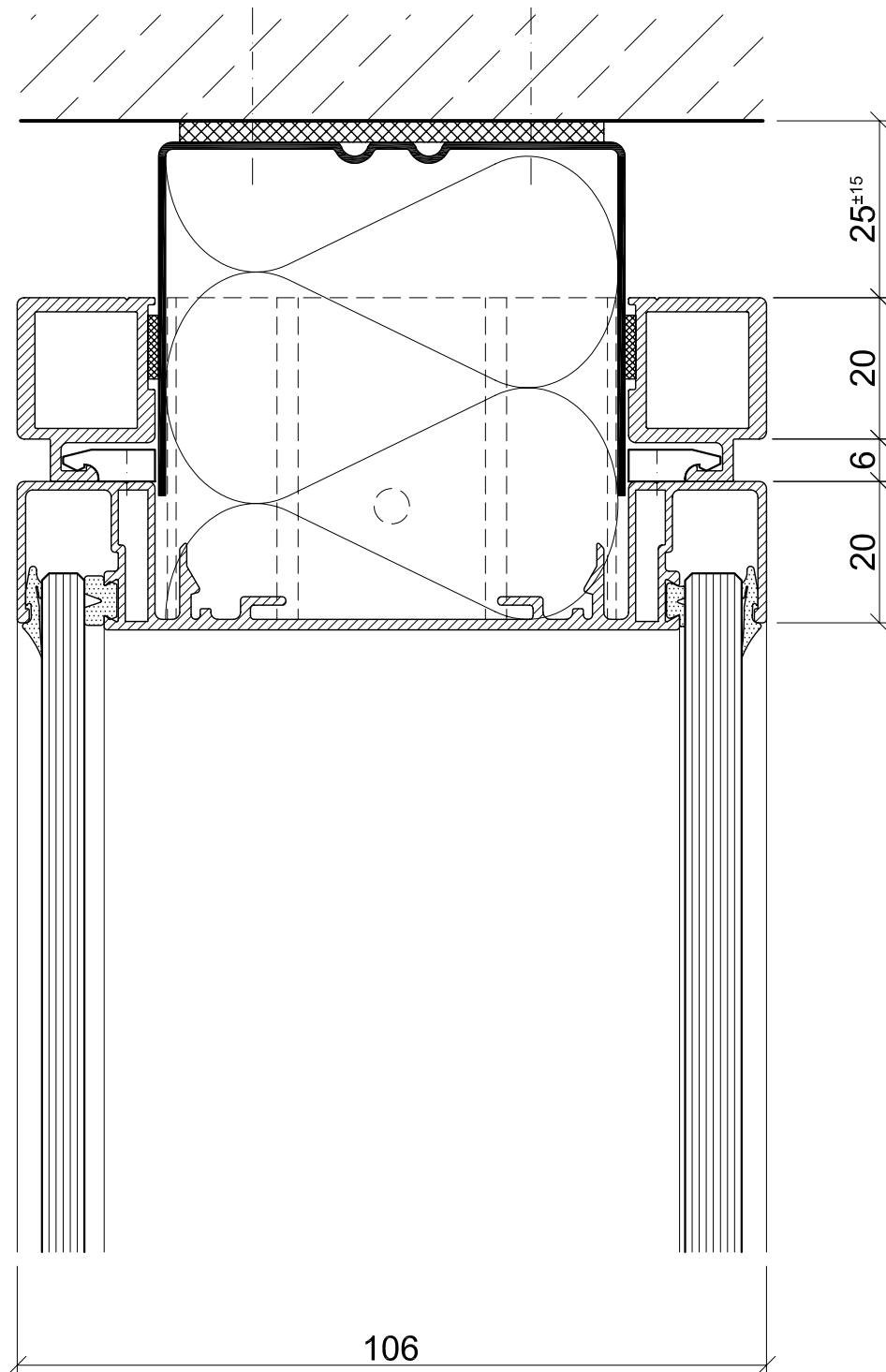


scale 1:1

FF-GG-BA.1

Glass wall fecofix

Top

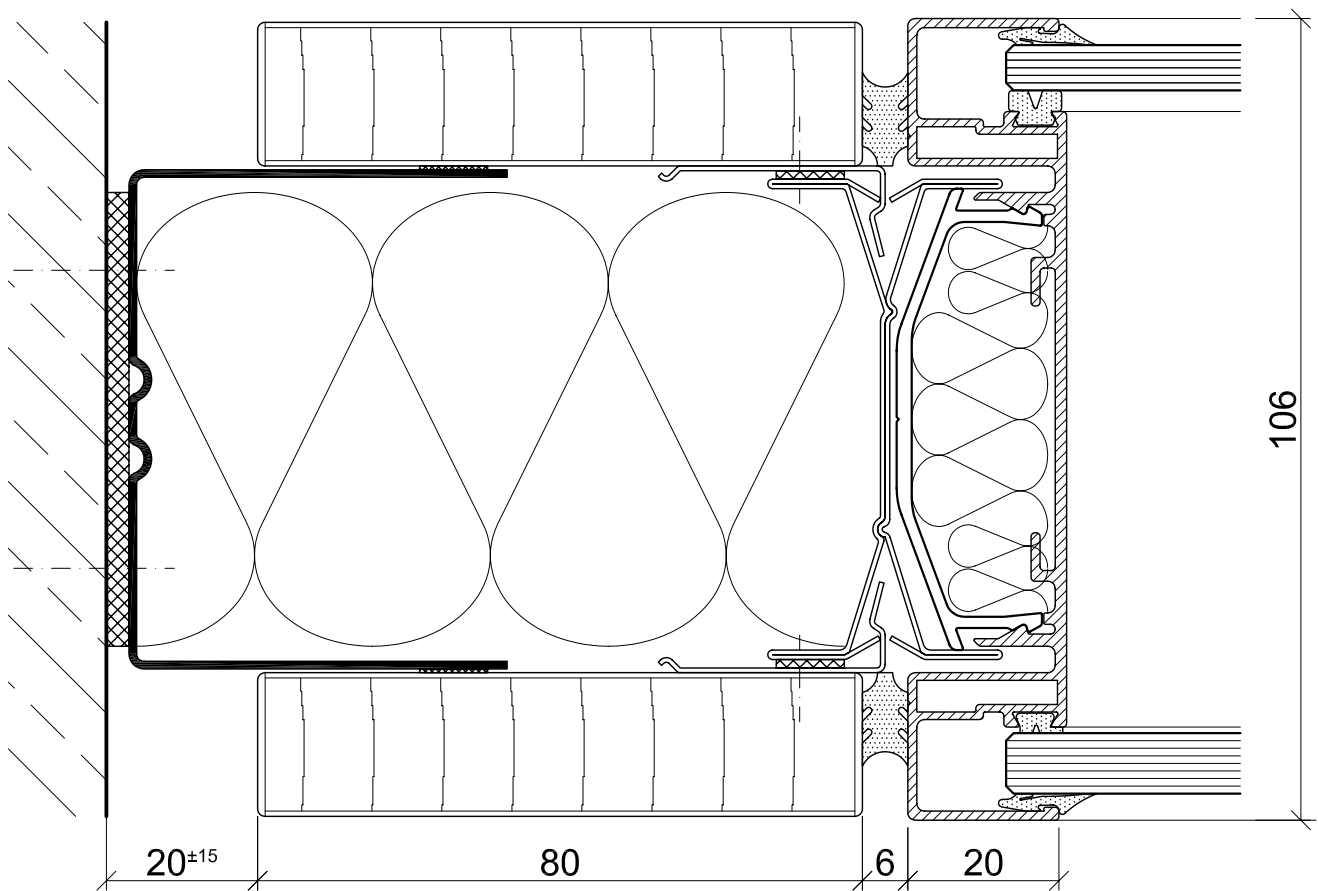


scale 1:1

FF-GG-DA.1

Glass wall fecofix

Wall abutment

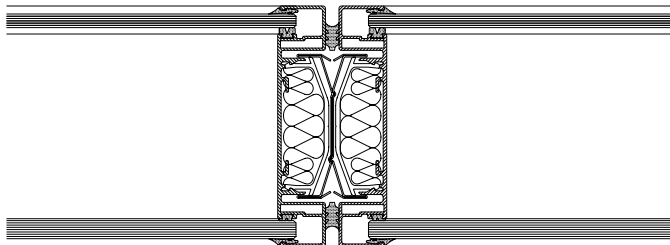
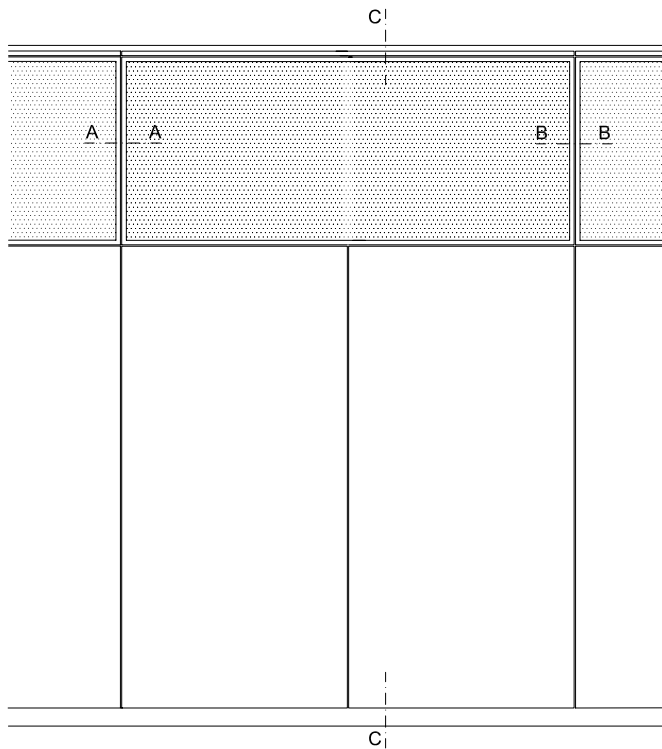


scale 1:1

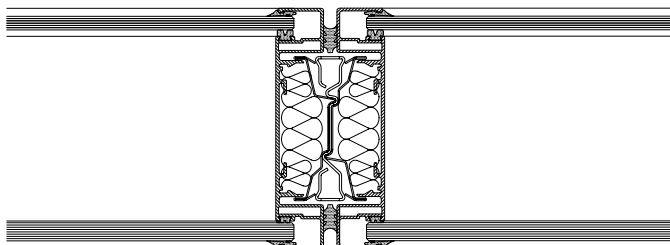
FF-GG-WA.1

Top glazing fecofix

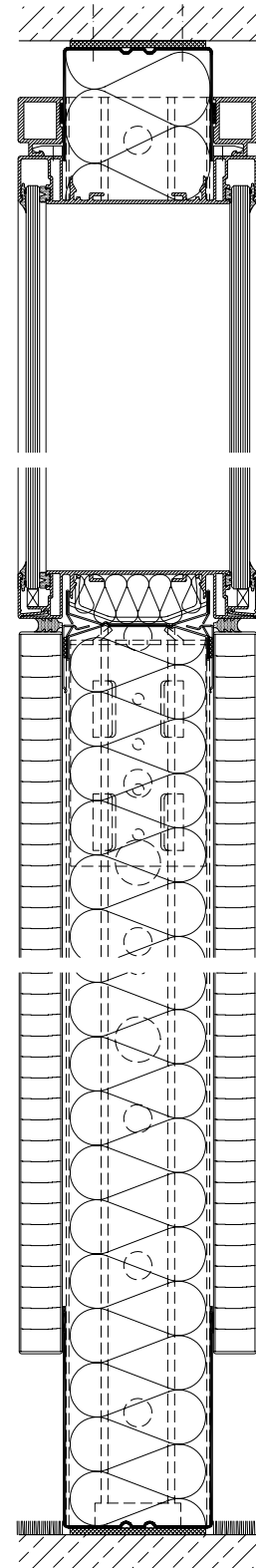
Aluminium frame only 20 mm wide
Wall flush double glazing
with standard or slotted upright for suspension system
Sound insulation $R_{w,P} = 43-47$ dB



section A - A
with standard upright



section B - B
with slotted upright



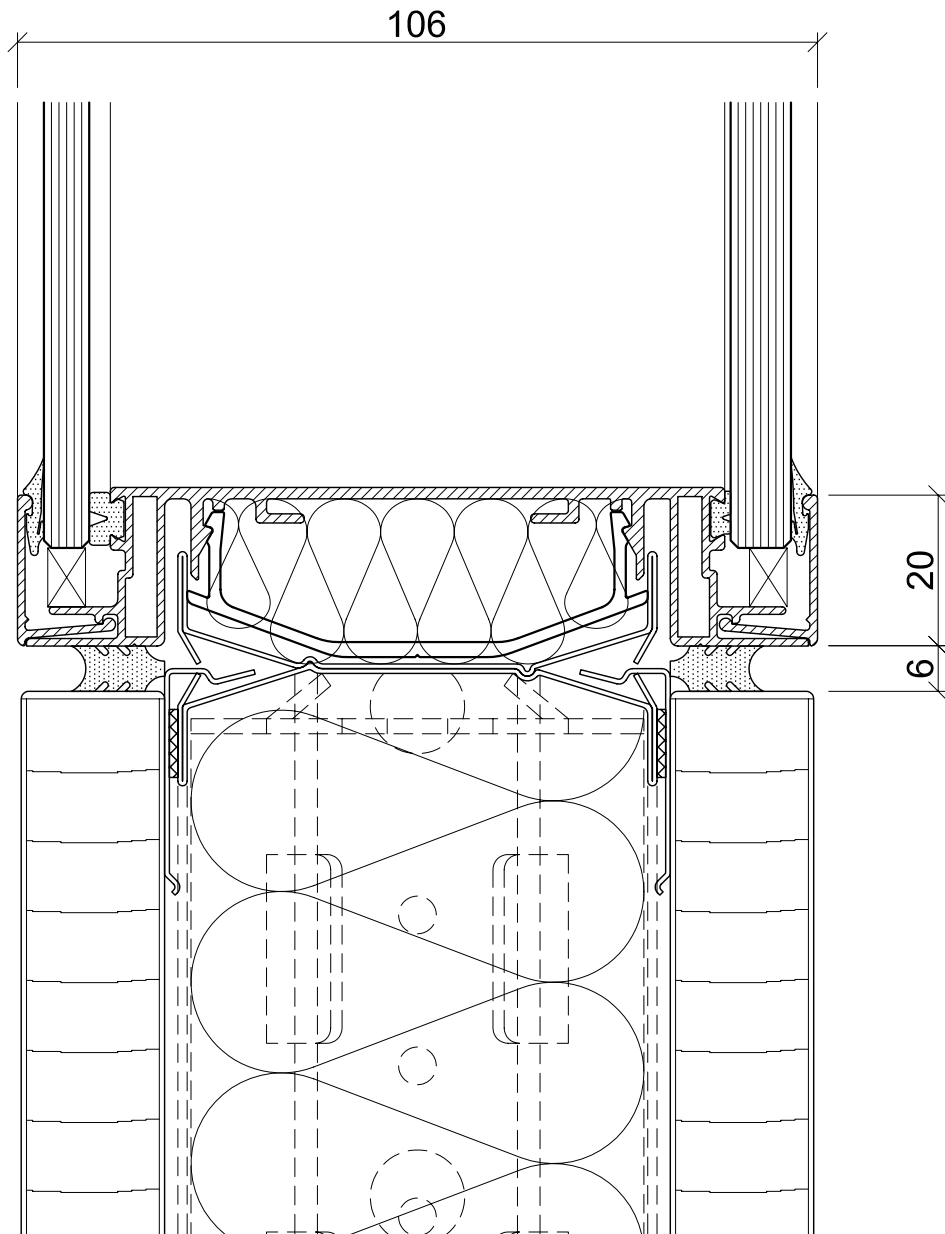
section C - C

scale ~1:3

FF-OL-AN.1

Top glazing fecofix

Horizontal joint

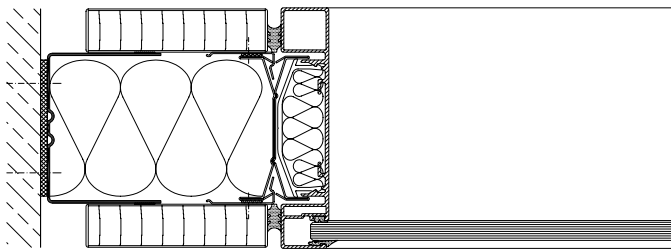
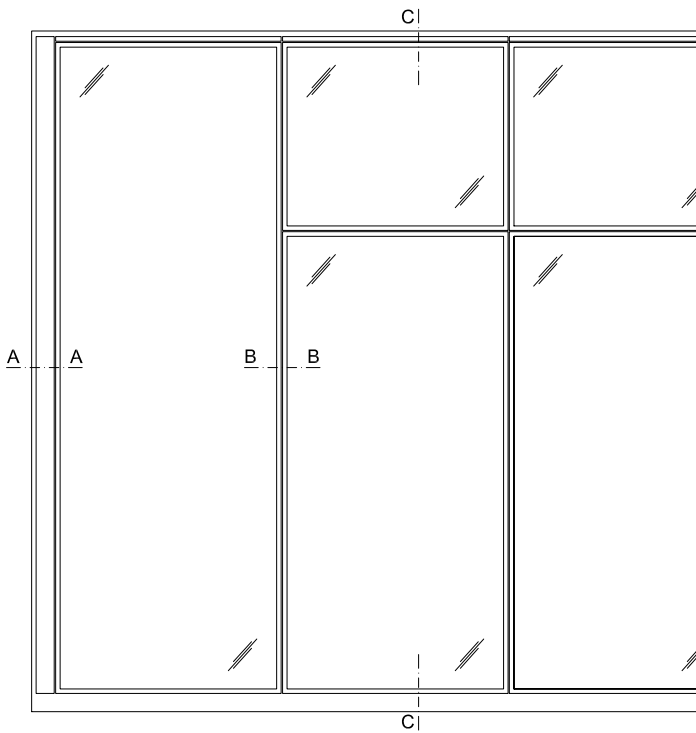


scale 1:1

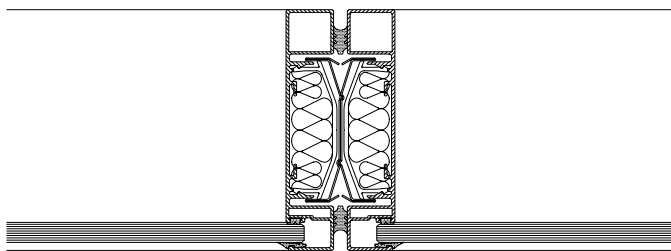
FF-OL-HF.1

Glass wall fecofix

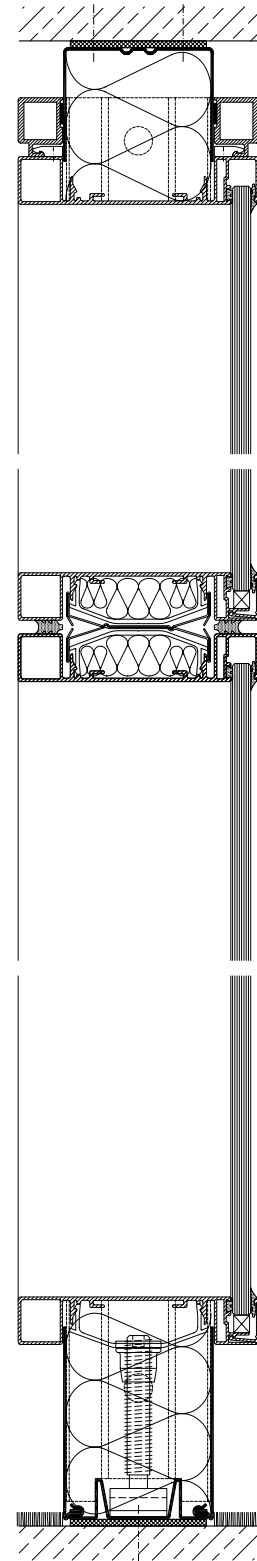
Aluminium frame only 20 mm wide
Wall flush single glazing
Sound insulation $R_{w,P} = 32-37$ dB



section A - A



section B - B



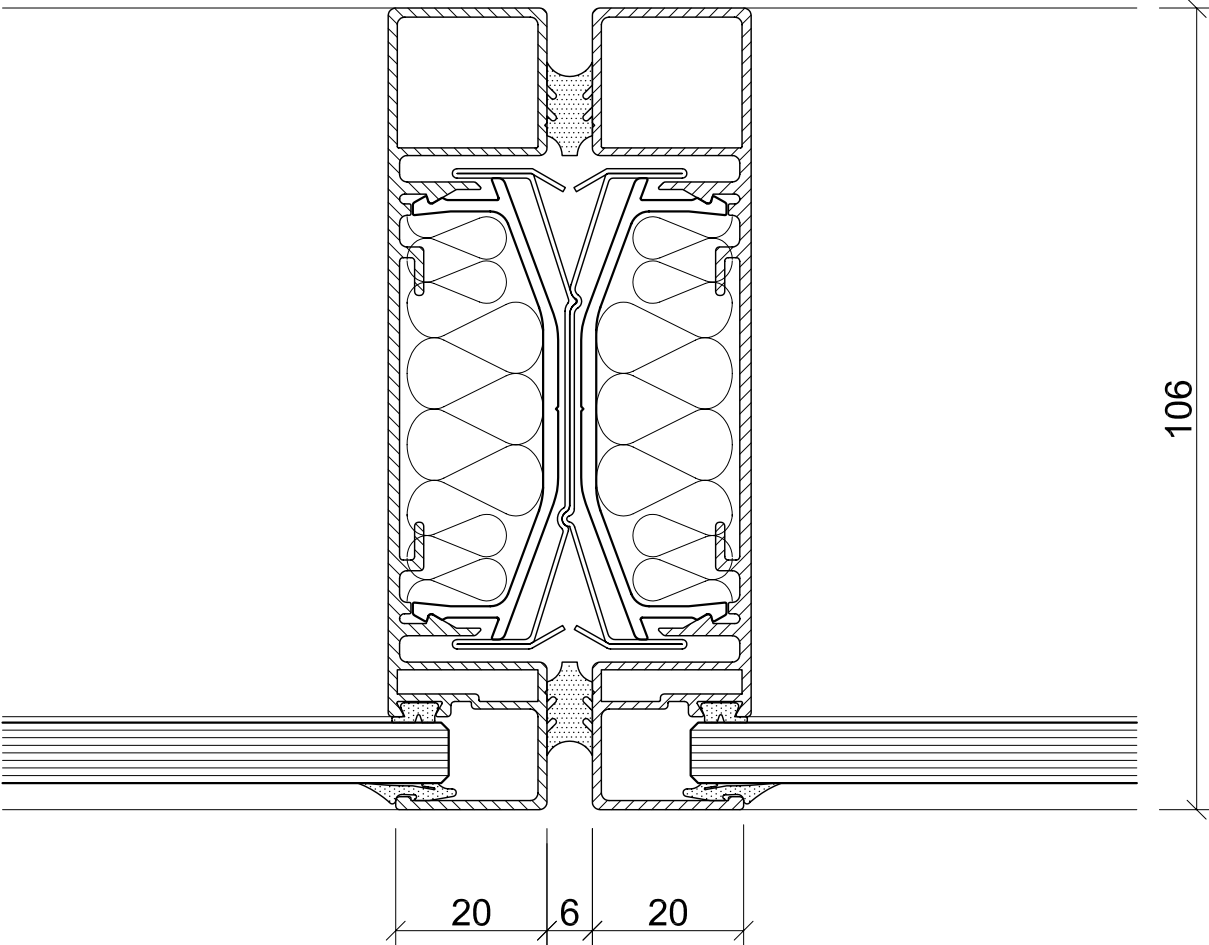
section C - C

scale ~1:3

FF-GG-AN.2

Glass wall fecofix

Vertical joint

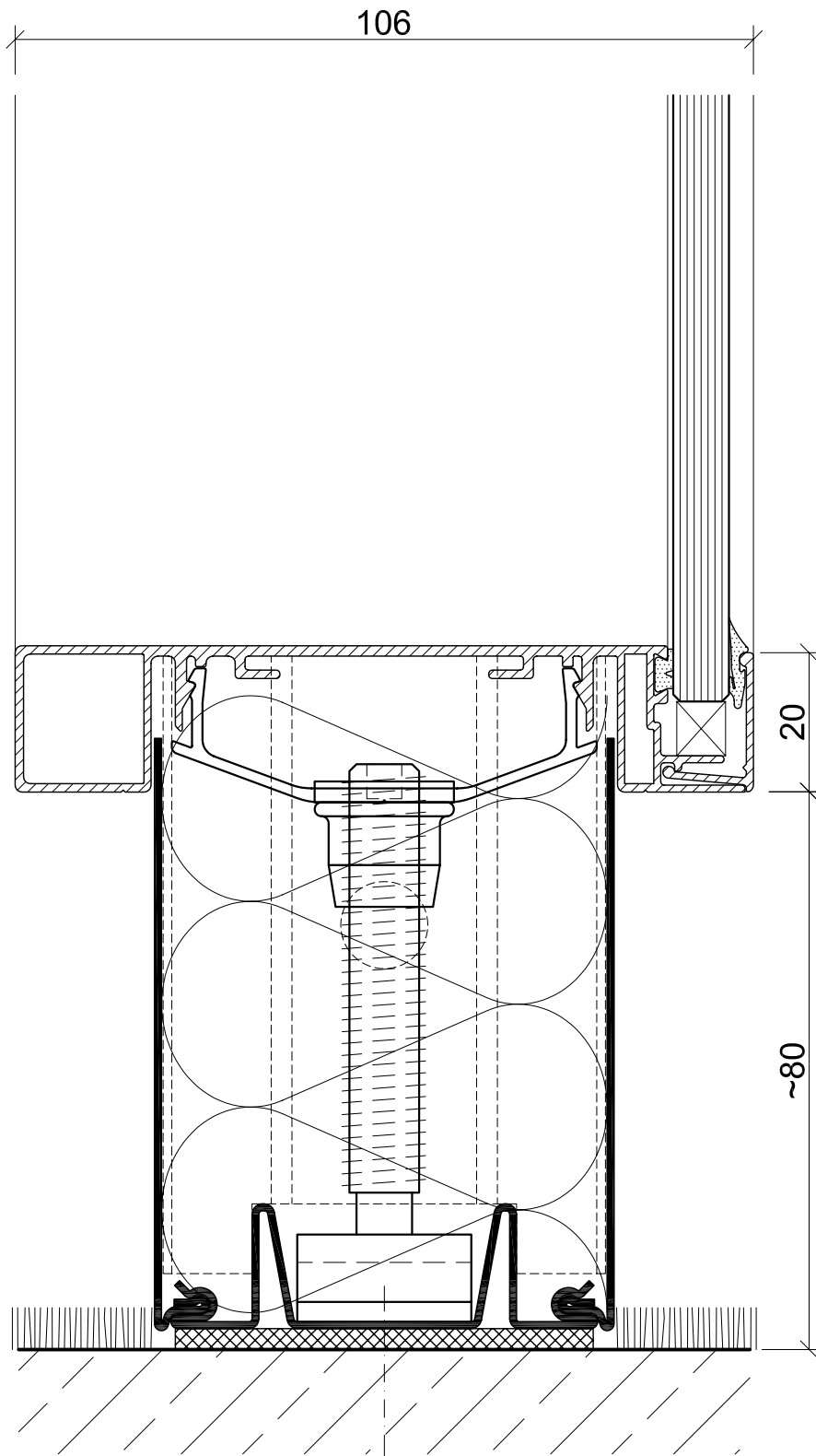


scale 1:1

FF-GG-MF.2

Glass wall fecofix

Bottom

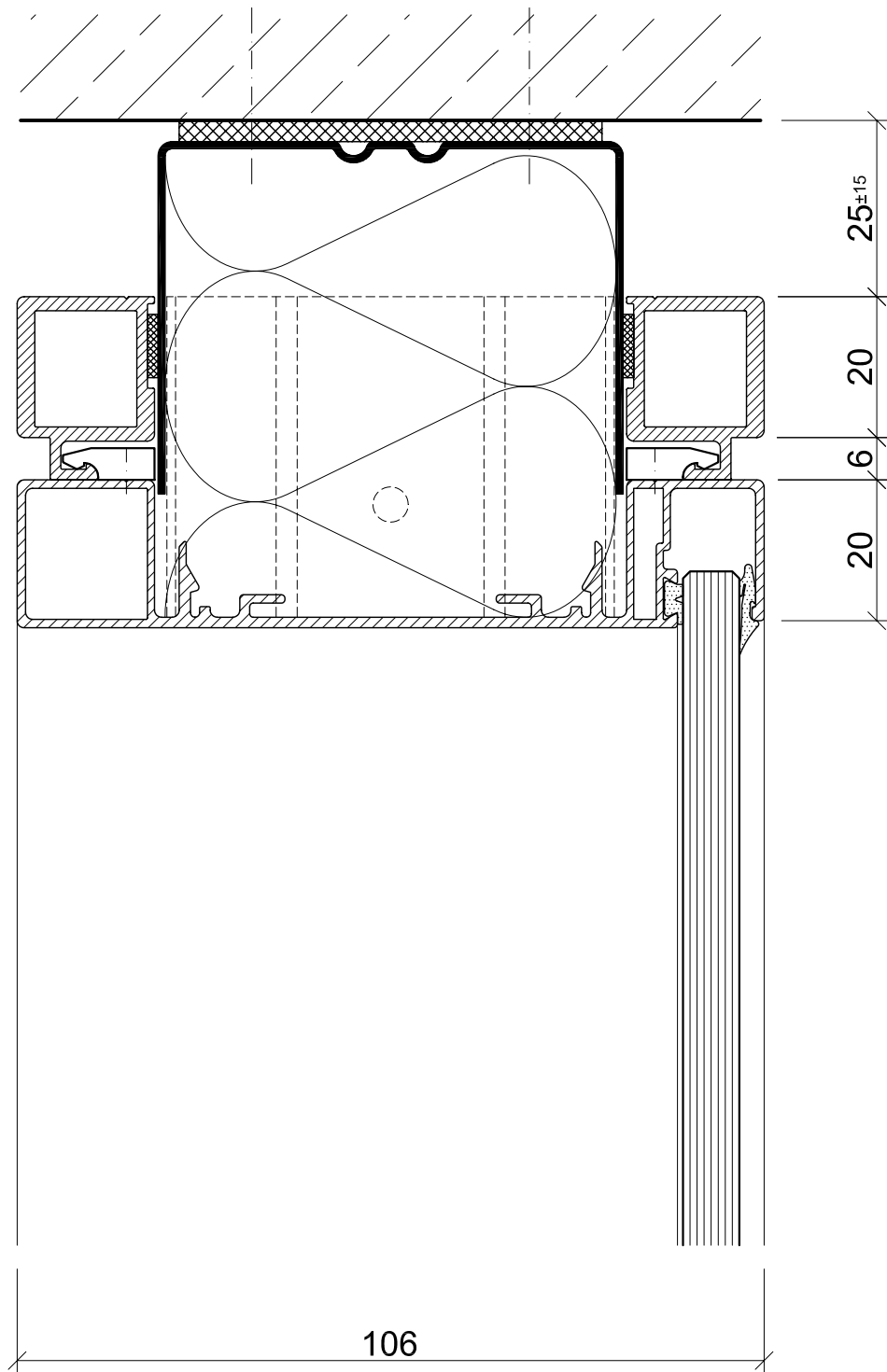


scale 1:1

FF-GG-BA.2

Glass wall fecofix

Top

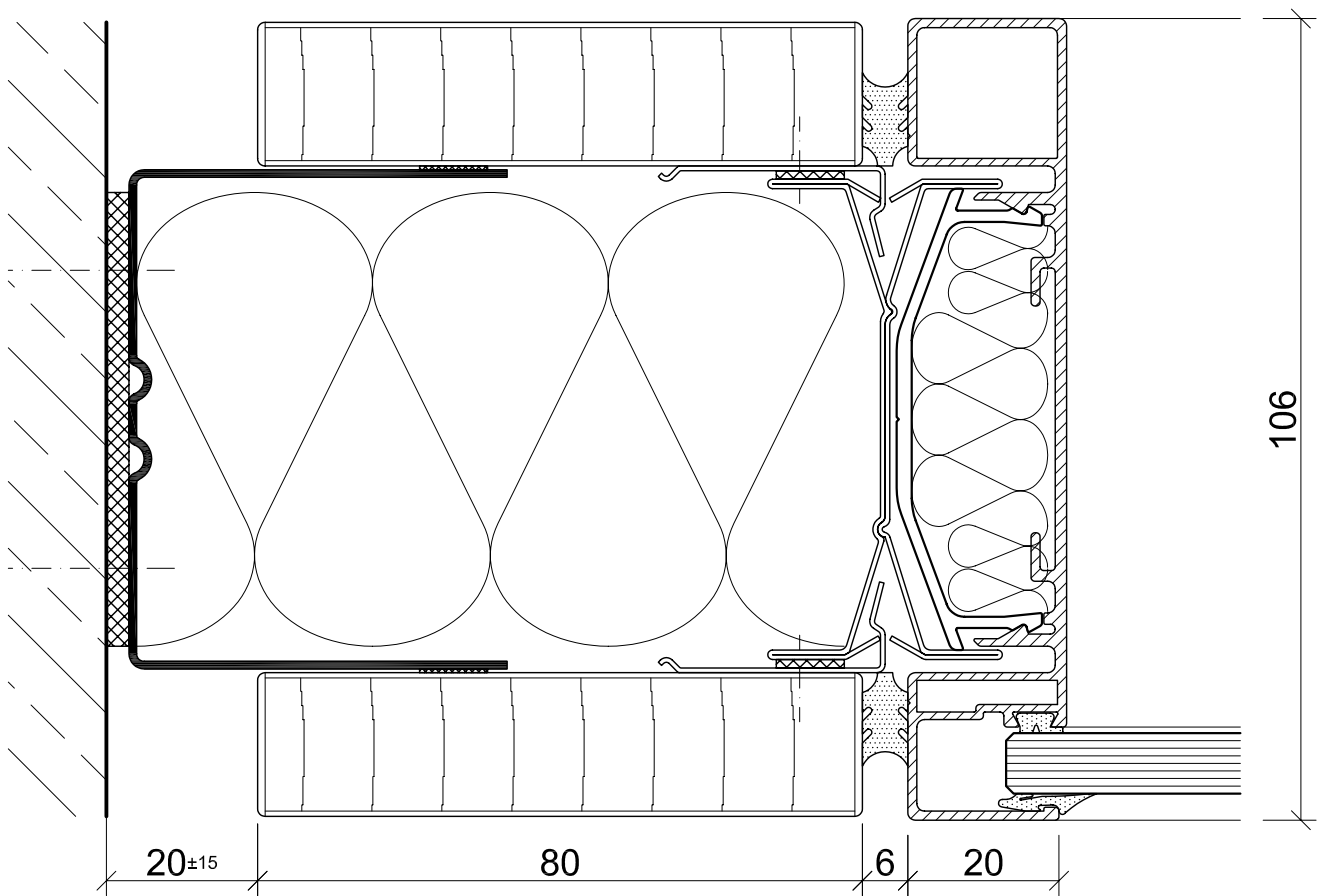


scale 1:1

FF-GG-DA.2

Glass wall fecofix

Wall abutment



scale 1:1

FF-GG-WA.2