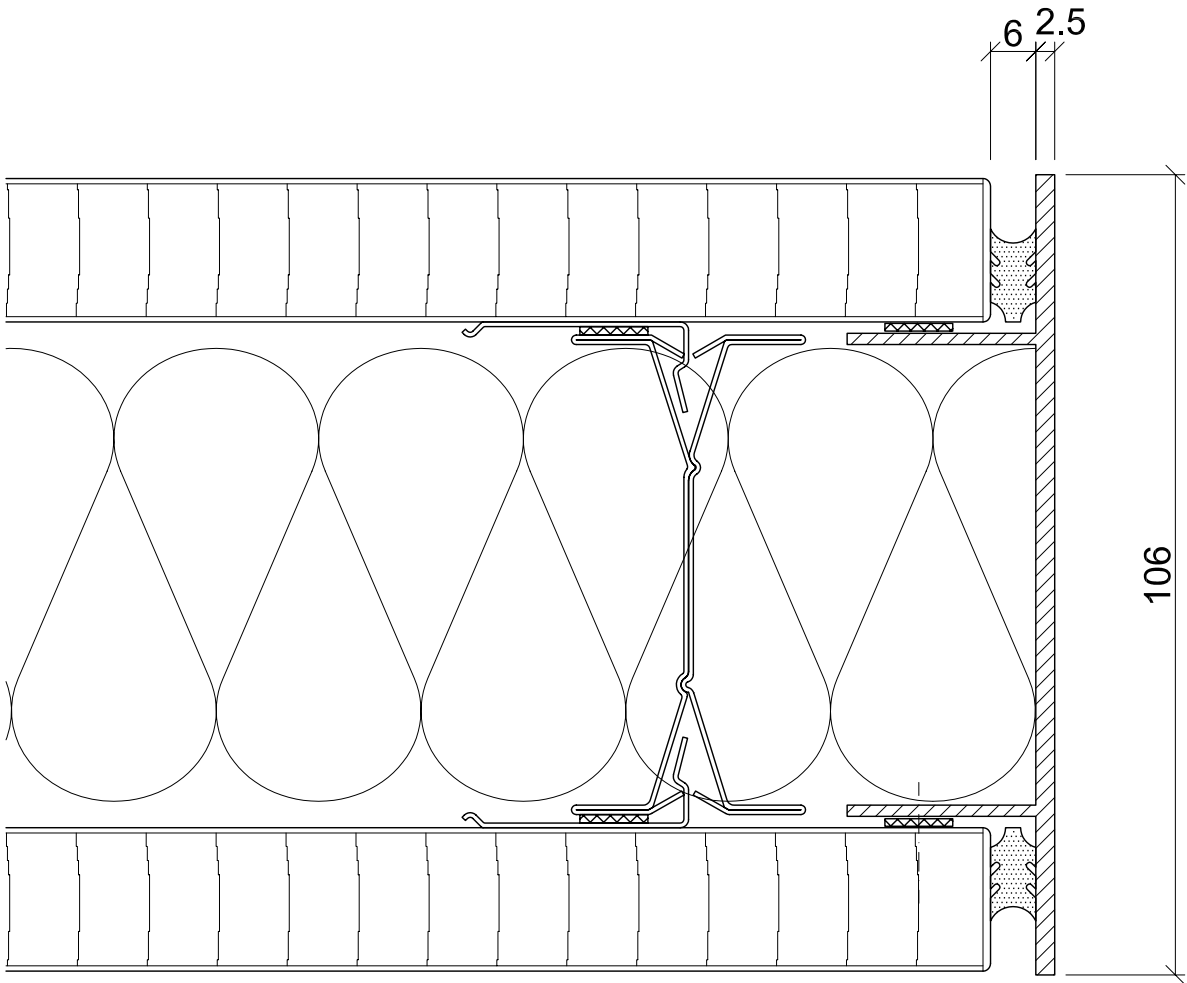


# Wall stop 2/106

Slim aluminium profile

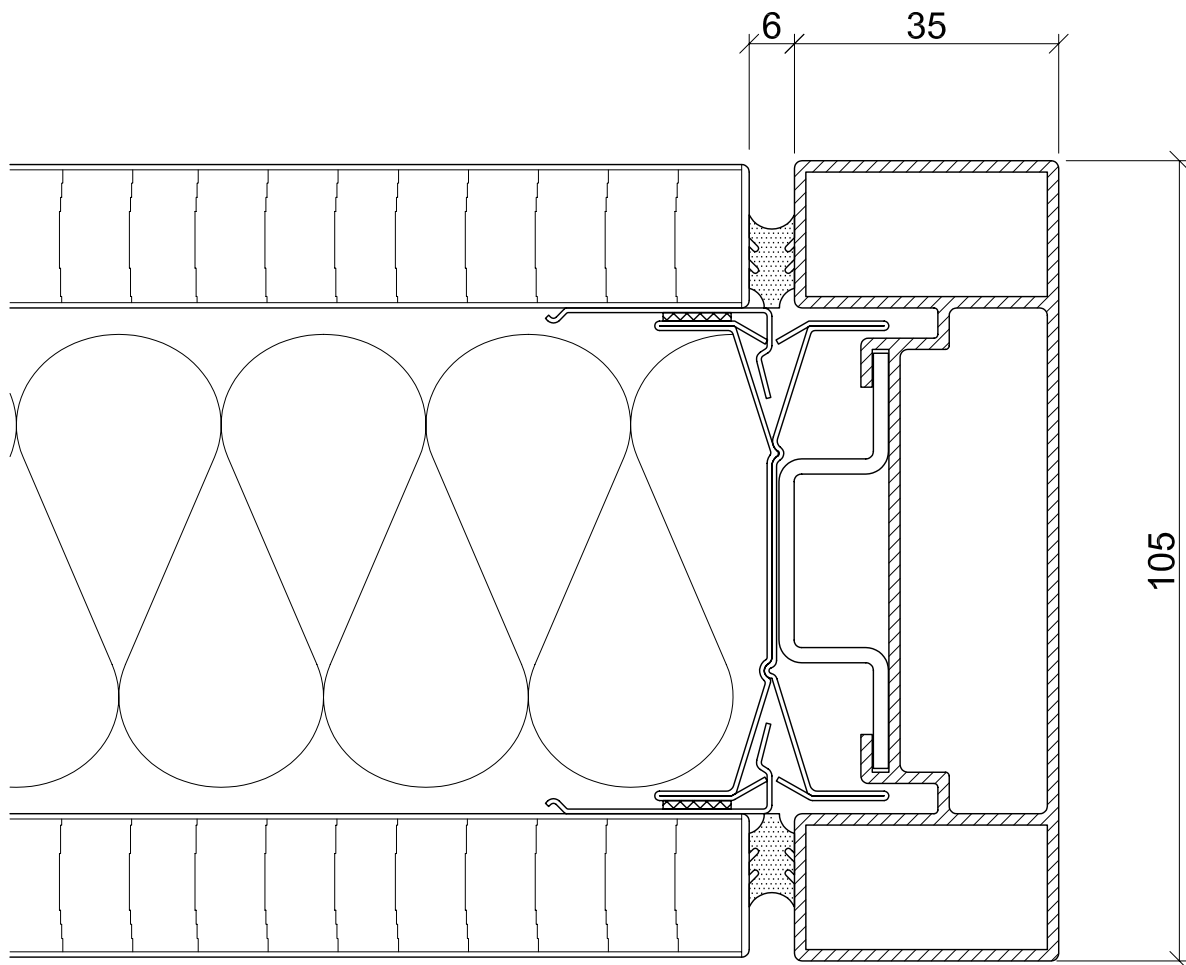


scale 1:1

FD-AS-2.1

# Wall stop 35/105

For solid walls

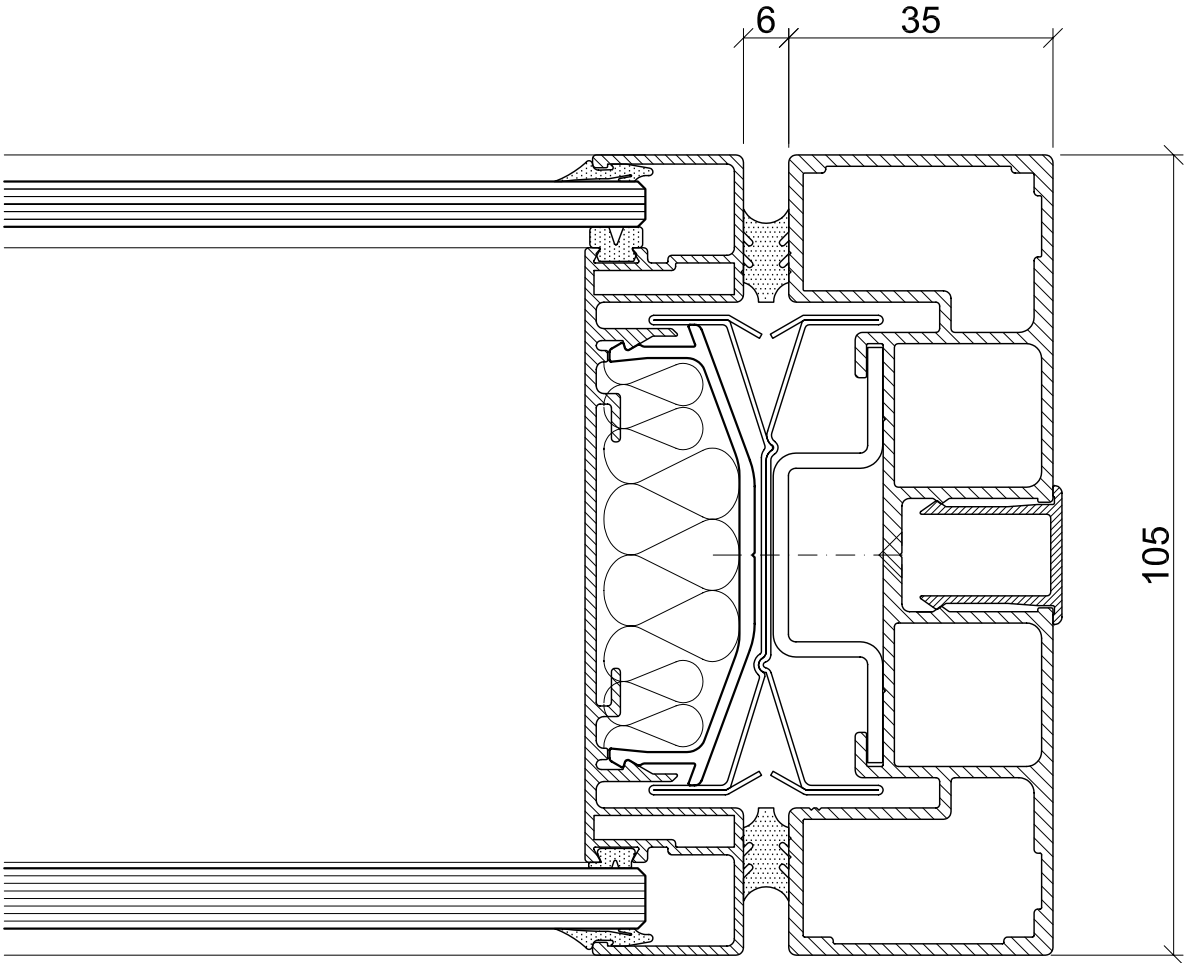


scale 1:1

FD-AS-35.1

# Wall stop 35/105

Two parts aluminium profile  
for all glass wall types

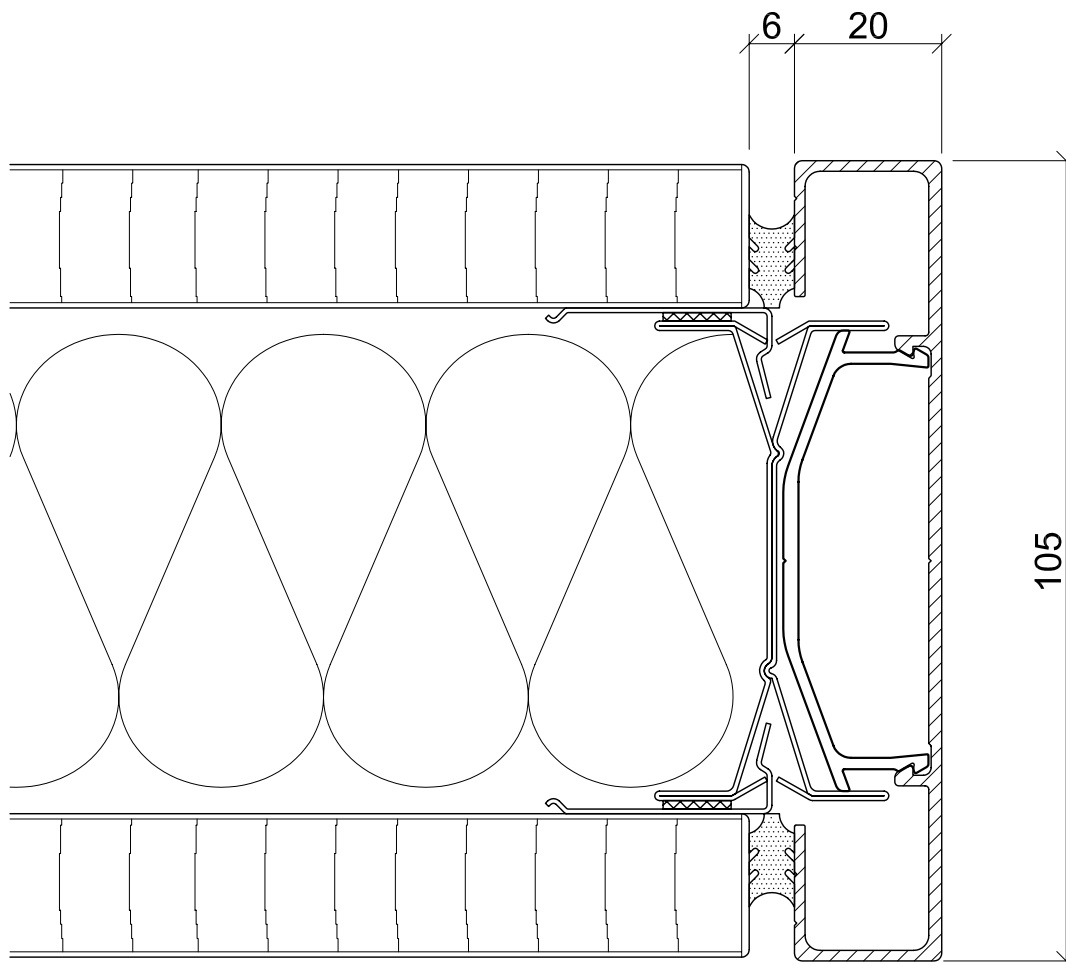


scale 1:1

FD-AS-35.2

# Wall stop 20/105

For solid walls

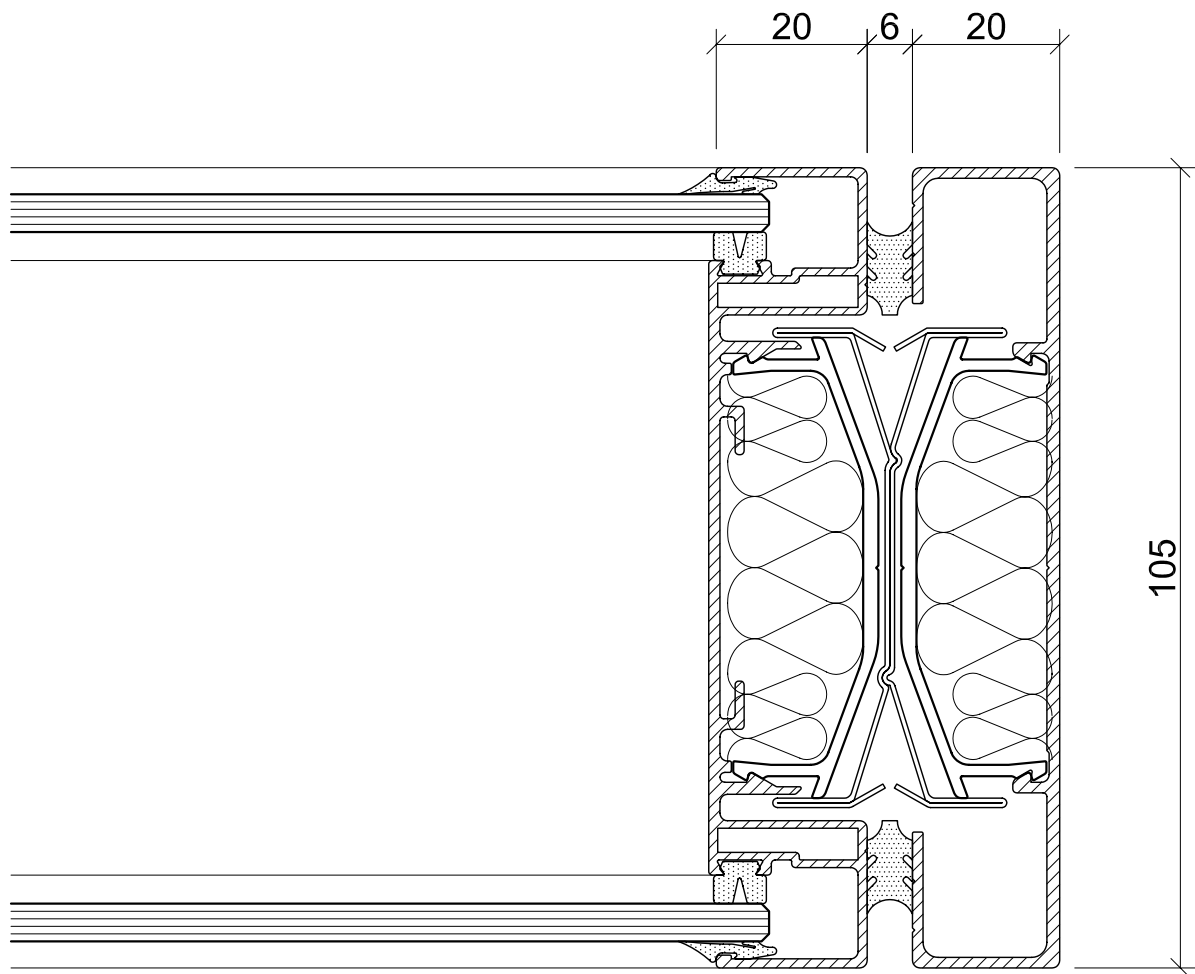


scale 1:1

FD-AS-20.1

# Wall stop 20/105

Aluminium profile



scale 1:1

FD-AS-20.2